



# Sox-12 Polyclonal Antibody

<b>Catalog No</b>	YP-Ab-02029
<b>Isotype</b>	IgG
<b>Reactivity</b>	Human;Mouse
<b>Applications</b>	IHC;IF;ELISA
<b>Gene Name</b>	SOX12
<b>Protein Name</b>	Transcription factor SOX-12
<b>Immunogen</b>	The antiserum was produced against synthesized peptide derived from human SOX12. AA range:71-120
<b>Specificity</b>	Sox-12 Polyclonal Antibody detects endogenous levels of Sox-12 protein.
<b>Formulation</b>	Liquid in PBS containing 50% glycerol, 0.5% BSA and 0.02% sodium azide.
<b>Source</b>	Polyclonal, Rabbit,IgG
<b>Purification</b>	The antibody was affinity-purified from rabbit antiserum by affinity-chromatography using epitope-specific immunogen.
<b>Dilution</b>	IHC: 1/100 - 1/300. ELISA: 1/20000.. IF 1:50-200
<b>Concentration</b>	1 mg/ml
<b>Purity</b>	≥90%
<b>Storage Stability</b>	-20°C/1 year
<b>Synonyms</b>	SOX12; SOX22; Transcription factor SOX-12; Protein SOX-22
<b>Observed Band</b>	
<b>Cell Pathway</b>	Nucleus .
<b>Tissue Specificity</b>	Expressed most abundantly in the CNS (PubMed:9215677). Expressed in the heart, pancreas, thymus, testis and ovary (PubMed:9215677). Weakly expressed in brain, placenta, lung, liver, skeletal muscle, kidney, spleen, prostate, small intestine, colon, and peripheral blood lymphocytes (PubMed:9215677).
<b>Function</b>	function:Binds to the sequence 5'-AACAAAT-3'.,similarity:Contains 1 HMG box DNA-binding domain.,tissue specificity:Expressed most abundantly in the CNS. Also expressed in fetal brain and kidney and adult heart, pancreas, testis and ovary. Other tissues were only weakly positive.,
<b>Background</b>	Members of the SOX family of transcription factors are characterized by the presence of a DNA-binding high mobility group (HMG) domain, homologous to the HMG box of sex-determining region Y (SRY). Forming a subgroup of the HMG domain superfamily, SOX proteins have been implicated in cell fate decisions in a diverse range of developmental processes. SOX transcription factors have diverse tissue-specific expression patterns during early development and have been proposed to act as target-specific transcription factors and/or as chromatin structure regulatory elements. The protein encoded by this gene was identified as



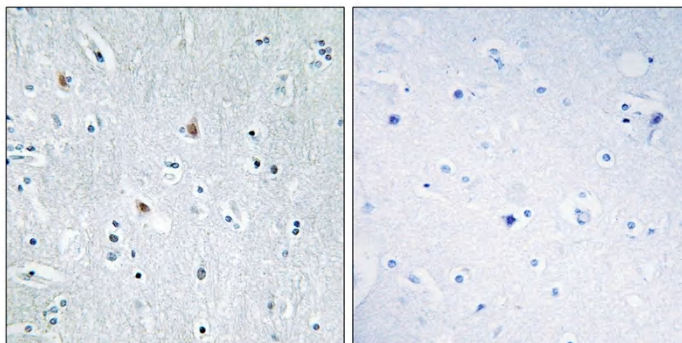
a SOX family member based on conserved domains, and its expression in various tissues suggests a role in both differentiation and maintenance of several cell types. [provided by RefSeq, Jan 2013],

**matters needing attention**

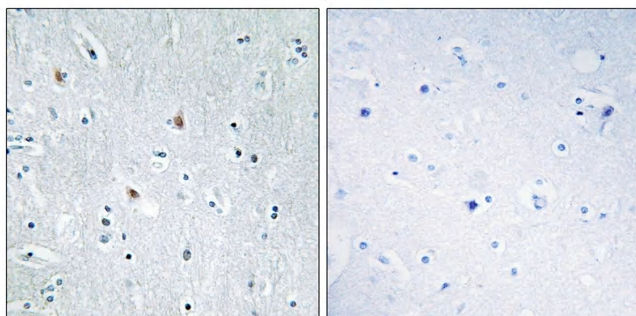
Avoid repeated freezing and thawing!

**Usage suggestions**

This product can be used in immunological reaction related experiments. For more information, please consult technical personnel.



**Products Images**



Immunohistochemistry analysis of paraffin-embedded human brain tissue, using SOX12 Antibody. The picture on the right is blocked with the synthesized peptide.